

PNCA CAMPUS



511 BUILDING
Arlene and Harold Schnitzer
Center for Art and Design
511 NW Broadway

GLASS BUILDING
Shops
2139 N Kerby Ave

ARTHOUSE
33 NW Park

QUICK GUIDE

Arlene and Harold Schnitzer Center for Art and Design

LABS / STUDIOS

- 618-623 Animation Studio
- 405 Center for Design
- 610, 617, 413B BFA Thesis Studios
- B13 Documentation Studio
- 507 Digital Print Studio (DPS)
- 513A Foundation Animation Station
- 230-233, 257 Gilkey Center for Printmaking
- 414 Illustration Studio
- 306 Intermedia
- B04 Lighting Studio
- 217, 218 Creative Technology Lab
- 139A Dorothy Lemelson Innovation Studio
- 505, 605 Painting Studios
- B07 Photography Studio
- 406 Print Production Center
- 407 Wacom Lab
- 139 Watershed Center of Fine Art Publishing and Research
- 612-613 Video and Sound Studios

EXHIBITIONS / PROGRAMMING SPACES

- 157 157 Gallery
- 103 Atrium
- B10 B10 Student Gallery
- 102 Center for Contemporary Art & Culture, 511 Gallery
- 137, 138 Ed Cauduro and Dane Nelson Collection Studies Lab
- M31 M31 Student Project Space
- 107 Shipley/Collins Mediatheque

STUDENT RESOURCES

- 114, M10 Albert Solheim Library
- 118 Academic Support Center
- 268 Career Design
- 274, 276 Office of the Dean
- 265 Financial Aid/Student Accounts
- 265 Registration
- 501 Student Lounge
- 270 Accessible Education Services
- 502 Technology Checkout (MRC)

Glass Building

- Ceramic Workshop
- MFA Studios
- Metal Shop
- 3D Shops

ArtHouse

- Student Housing

IMPORTANT NUMBERS

Front Desk (503) 226-4391
Security (503) 370-6911
Admissions (503) 821-8972

Student Life (503) 821-8925
Library (503) 821-8966
Community Education (503) 821-8967

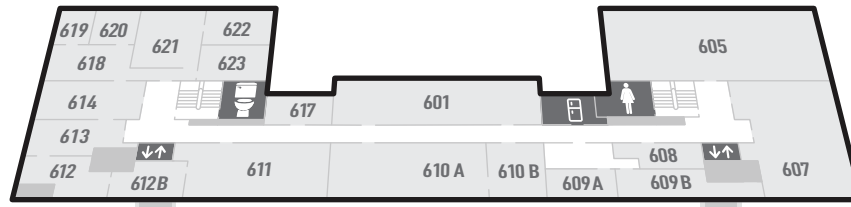
PACIFIC NORTHWEST COLLEGE OF ART

ARLENE AND HAROLD SCHNITZER CENTER FOR ART AND DESIGN

- ↓↑ ELEVATORS
- STAIRS
- KITCHENETTE
- ALL-GENDER RESTROOM
- WOMEN'S RESTROOM
- MEN'S RESTROOM

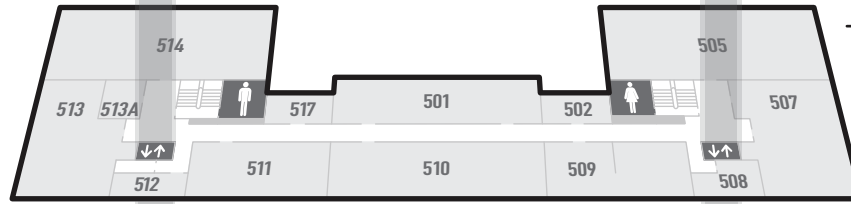
6TH FLOOR

- 601 Classroom
- 605 Painting Studio
- 607 Wacom Lab
- 608 Stop Motion Studio
- 610 BFA Studios
- 611 Classroom
- 612 Sound Studio & Recording Booth
- 612B Faculty Office
- 613 Faculty Office
- 614 Video & Sound Common Room
- 617 Animated Arts, Video & Sound Technician Office
- 618 Editing Room
- 619 Multiplane Studio
- 620 Animation Studio
- 621 Cintiq Studio
- 622 Stop Motion Studio
- 623 Animation Studio



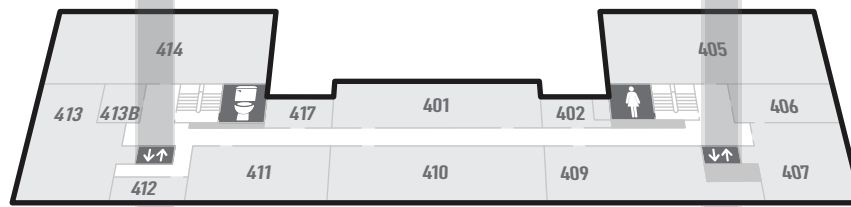
5TH FLOOR

- 501 Student Lounge
- 502 Technology Checkout
- 505 Painting Studio
- 507 Digital Print Studio
- 508 Faculty Office
- 509 Information Technology
- 510, 511 Classroom
- 512 Faculty Office
- 513 Classroom
- 513B Foundation Animation Studio
- 514 Foundation 3D Studio
- 517 Marketing, Web Applications



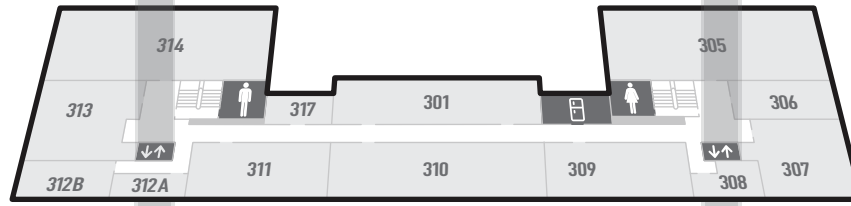
4TH FLOOR

- 401 Classroom
- 402 Faculty Office
- 405 Classroom
- 406 Print Production Center
- 407 Print Production Lab
- 409, 410 Classroom
- 411 Computer Lab
- 413 Critical Studies Classroom
- 413B BFA Studio
- 414 Classroom
- 417 Faculty Office



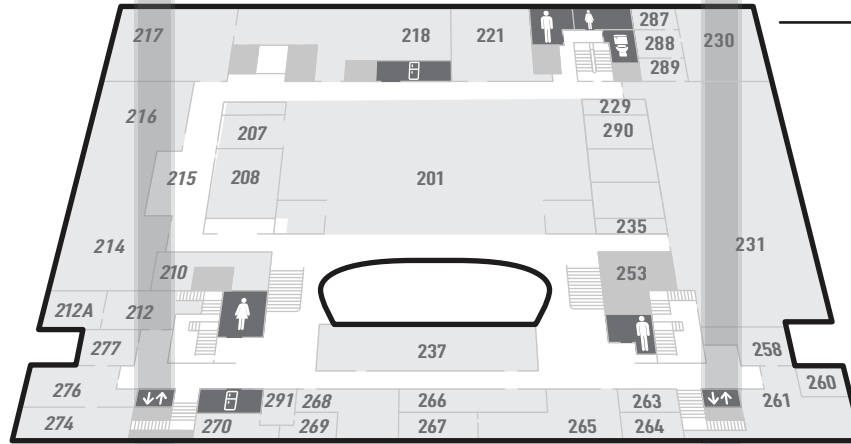
2ND FLOOR

- 201 Commons & BFA Studios
- 207 Holt Gallery
- 208 Academic Wellness / Writing Studio
- 210 Academic Support and Advising
- 212, 212A Willamette Hotel Suite
- 214, 215, 216 Critique Space
- 217, 218 Creative Technology Lab
- 221 Bookmaking
- 229 Aquatint Room
- 230 Screenprinting Studio
- 231 Gilkey Center for Printmaking
- 235 Printmaking Store
- 237 Suzanne Hammer Board Room
- 253 Faculty Office
- 258 Broadway Conference Room
- 260 Student Affairs
- 263 HR/Payroll
- 265 Business Office / Student Accounts
- 265 Registration
- 265, 267 Financial Aid
- 266 Mail Room
- 268 Career Design (OCD), International Education (OIE)
- 269 Dean of Students for Community Care and Inclusion
- 270 Accessible Education Services
- 274, 276 Office of the Dean
- 277 Academic Affairs
- 287 Screen Washout Room
- 289 Coating Room
- 290 Etching Room
- 291 Hallway to Accessible Education and Dean of Students for Community Care and Inclusion



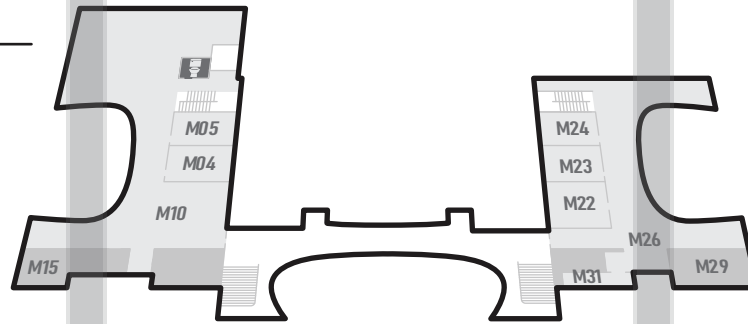
3RD FLOOR

- 301 Faculty Office
- 305 Drawing Studio
- 306, 307 Classroom
- 308 Faculty Office
- 309, 310 Classroom
- 311 Computer Lab
- 312A Mental Health Counseling Office
- 312B Reflection Room
- 313 Classroom
- 314 Drawing Studio
- 317 Faculty Office



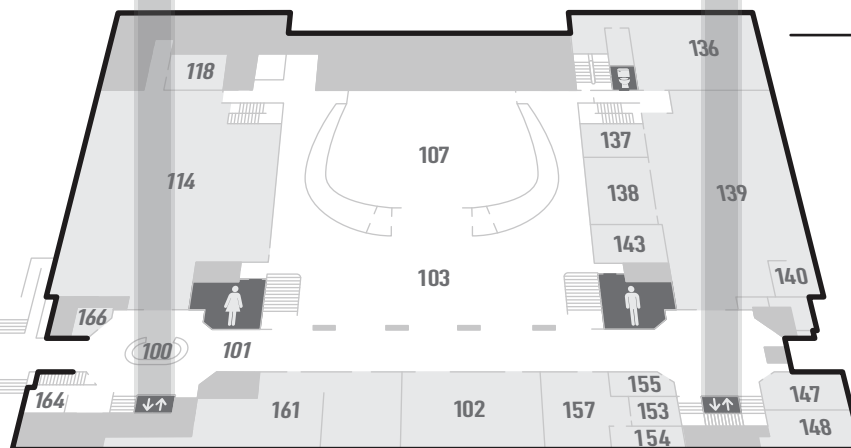
MEZZANINE

- M04, M05 Study Rooms
- M10 Albert Solheim Library
- M15 Library Lounge
- M26 Dorothy Lemelson Innovation Studio
- M29 Classroom
- M31 CD/DS Tool Storage



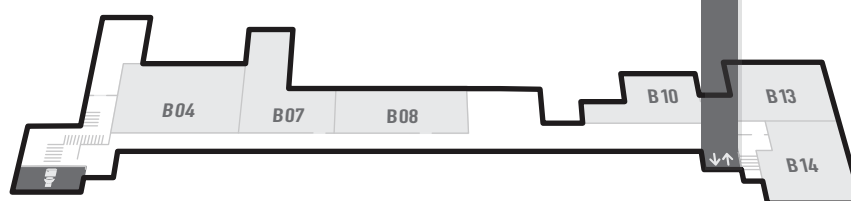
1ST FLOOR

- 100 Front Desk
- 101 Ann Payne Elden Creative Corridor
- 102 Center for Contemporary Art & Culture
- 103 Atrium
- 107 Shipley-Collins Mediatheque
- 114 Reference Library
- 118 Academic Support Center
- 137, 138 Ed Cauduro and Dane Nelson Collection Studies Lab
- 139 Dorothy Lemelson Innovation Studio
- 140 Office for the Assistant Director of Galleries and Exhibitions
- 143 Moonflower Cafe
- 147 Graduate Admissions
- 148 HFSGS Faculty
- 154 Administrative Director and Academic Director of Graduate Studies
- 155 Assistant Director of Campus Safety
- 157, 153 157 Gallery
- 158, 161 Admissions
- 164 Community Education, Curator
- 166 Campus Safety



BASEMENT

- B04 Lighting Studio
- B07 Film Processing Lab
- B08 Darkroom
- B10 B10 Gallery
- B13 Documentation Studio
- B14 Facilities Office



ENTRANCE →